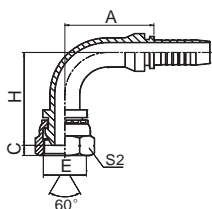
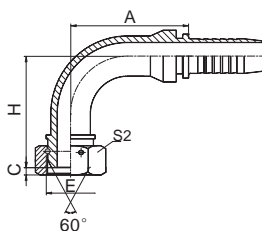


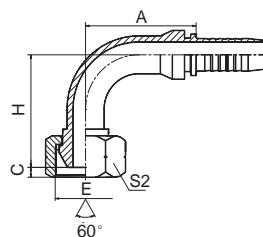
# 扣压式软管接头



**KF22691**



**KF22691-W**



**KF22691-T**

90° 英管内螺纹 60° 外锥面  
90° BSP FEMALE 60° CONE

代号 PART NO.	螺纹 E THREAD E	胶管 HOSE BORE		尺寸 DIMENSIONS			
		公称内径 DN	标号 DASH	A	C	H	S2
KF22691-02-03	G1/8"X28	5	03	26.5	5.5	31.5	14
KF22691-02-04	G1/8"X28	6	04	30	5.5	34.5	14
KF22691-04-03	G1/4"X19	5	03	26.5	5.5	33.5	19
KF22691-04-04	G1/4"X19	6	04	30	5.5	36.5	19
KF22691-04-05	G1/4"X19	8	05	33	5.5	39.5	19
KF22691-04-06	G1/4"X19	10	06	30	5.5	36.5	19
KF22691-06-04	G3/8"X19	6	04	30	6.3	37.7	22
KF22691-06-05	G3/8"X19	8	05	33	6.3	40.7	22
KF22691-06-06	G3/8"X19	10	06	35.3	6.3	43	22
KF22691-08-06T	G1/2"X14	10	06	35.3	7	43.3	27
KF22691-08-08	G1/2"X14	12	08	41	7.5	51	27
KF22691-08-10	G1/2"X14	16	10	56.5	7.5	55.5	27
KF22691-10-08	G5/8"X14	12	08	41	9.5	51.5	30
KF22691-10-10	G5/8"X14	16	10	56	9.5	56	30
KF22691-12-08T	G3/4"X14	12	08	41	10.9	52.1	32
KF22691-12-10	G3/4"X14	16	10	56.5	10.9	56.6	32
KF22691-12-12	G3/4"X14	20	12	64.9	10.9	66.1	32
KF22691-16-12T	G1"X11	20	12	65.5	11.7	68.3	41
KF22691-16-14	G1"X11	22	14	71.2	11.7	69.3	41
KF22691-16-16	G1"X11	25	16	76.7	11.7	73.8	41
KF22691-20-16T	G1.1/4"X11	25	16	78	11	69.5	50
KF22691-20-20W	G1.1/4"X11	32	20	91.5	11	84.3	50
KF22691-24-24W	G1.1/2"X11	40	24	109.4	13	103	55
KF22691-32-32W	G2"X11	50	32	131.8	16	123.3	70

注：1.表中代号用于编织软管。 2.如需用于缠绕软管代号改为22692-xx-xx。  
Note: 1.For use with braided hoses. 2.If use with spiral hoses, hose fitting series number is 22692-xx-xx.